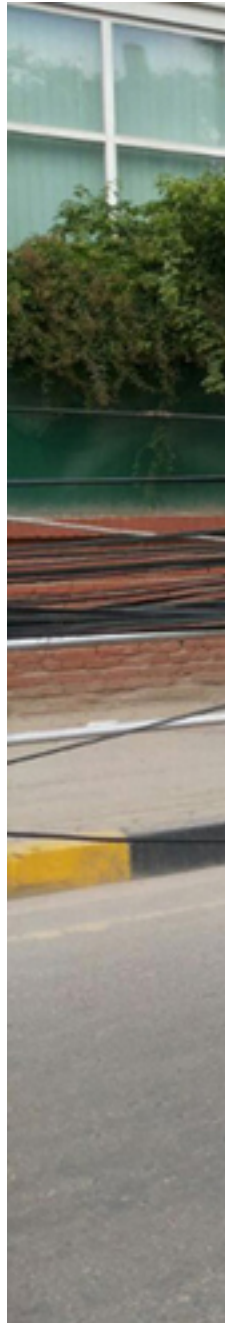


Having a power line falling on your car can be one of the scariest things you could face while driving. If an active power line falls onto your car, it charges the car full of electricity, making you and your passengers immediately at risk of being electrocuted to death if you make a wrong move.



## Steps

1 Stay inside your car and call 9-1-1 or the appropriate emergency number where you live. This is the safest way to

react. Give the emergency dispatcher your exact location. Do not touch the windows, doors, or anything metal such as the radio. Wait for trained professionals to rescue you. Warn anyone who starts walking towards the car to stay far away.

- The rubber tires ground the car, preventing the electricity from reaching you. If you step on the ground with another part of your body touching the car, your body acts as a bridge and electrical current will flow right through you.

2 If you absolutely must exit the car in an emergency situation (such as a fire), follow the next steps to safely leave the car.

3 Gently open the door all the way, being careful not

to touch anything metal.

4 Position your body so that you're facing the ground.

5 Jump off the car and land on both feet at the same time with your arms folded across your chest. Do not touch any part of the car with any part of your body as you jump.

6 Shuffle your feet across the ground until you reach a safe distance away from the car. A safe distance is considered at least 10 feet (3 meters). Keep your feet 6 inches (15 cm) together.

- The reason you will benefit from shuffling instead of walking is to avoid "step potential." When we walk, one foot is raised up in the air while the other stays on the ground. Electrical current can arc when you lift your foot and that creates the bridge needed for the current to pass through your body.

7 Stay away from the car and wait for help to arrive.

## Tips

- Throw a rubber car mat about 3

feet (about 1 meter) away from the car.  
When you jump, aim to land on the mat.  
The rubber material will act as an  
insulator as well and will keep you safe.

- Use your horn to alert other people.

- Your car could be pushed in the rear bumper by another car to attempt to remove the power lines and get your car away.

Convince a passer-by to do it, or if you happen to see an abandoned car when you're out, do it yourself. Don't commit a crime like carjacking or breaking into a car, though!



# Warnings

- Earthquakes can weaken poles and cause power lines to fall on your car. If caught in an earthquake, avoid parking your car near power lines. Also, take caution when driving in the aftermath.



- Having power lines on your car is an extremely dangerous life-or-death situation. Therefore, this must be emphasized: Do not make simultaneous contact with the car and ground as you exit the vehicle.

Source from website -->

<http://www.wikihow.com/>

เขียนโดย Administrator

วันพฤหัสบดีที่ 07 พฤษภาคม 2015 เวลา 03:58 น. - แก้ไขล่าสุด วันพฤหัสบดีที่ 07 พฤษภาคม 2015 เวลา 04:19 น.

---

{jcomments on}